

# AIRRAID<sup>®</sup>

## INTAKE SYSTEMS

### #200-102 INSTALLATION INSTRUCTIONS

### 1996-2000 G.M. Full Size Trucks & SUVs

### 4.3-5.0-5.7 Vortec Engines

Thank you for purchasing the Airaid Intake System. Please read the instruction manual carefully before proceeding with the installation. Contact Airaid @ (800) 498-6951: 8:00 AM - 5:00 PM MST Weekdays for questions regarding fit or instructions that are not clear to you. Your Airaid Intake System was carefully inspected and packaged. Check that no parts are missing, or damaged during shipping. If any parts are missing, contact Airaid. The air filter element is protected from direct exposure to water and debris in its new location. Care should be taken not to drive through deep water. WATER INGESTION IS THE DRIVERS RESPONSIBILITY! The air filter is reusable and should be cleaned using the Airaid Filter Tune-Up Kit periodically.

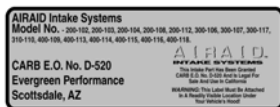
*Thank you for selecting Airaid.*

#### Airaid Packing List:

<b>700-420</b>	Airaid Premium Filter	1
<b>KITP300</b>	3.5 x 3.5 Stainless Coupler	1
<b>KIT102TAC</b>	Tube Assembly	1
<b>KIT102HP</b>		1
- KIT31C75HCS5	5/16-18 x 3/4" Hex Bolt	x2
- KIT31CNNEPZ	5/16" Nut	x2
- KIT25NWUSPZ	5/16" Washer	x2
- KIT102P	Bracket	x1
- Instructions		x1

#### Tools Required for this Installation:

- Ratchet wrench
- 13 mm socket
- 5/16" socket or nut driver
- 1/2" socket
- 1/2" wrench
- 6" socket extension
- Flat blade screwdriver



#### VEHICLE WARRANTY INFORMATION

Airaid Intakes and Filters will NOT void your vehicle's warranty. The federal Magnuson-Moss Warranty Act of 1975 states that the manufacturer can't void a vehicle's warranty because an aftermarket part is used. This is called a tie-in sale. Which means a manufacturer can't require the use of a certain brand of product. The only exception to this is the condition they provide the product for free. For assistance or more information the Federal Trade Commission can be contacted at 1-877-FTC-HELP (1-877-382.4357).

# ***Installation Instructions. Read Me!***

## **I DISCONNECT NEGATIVE (-) BATTERY CABLE.**

## **II Remove air filter housing.**

- a) Unsnap lid, open, unhinge and set aside.
- b) Remove filters and set aside.
- c) Gently lift up the Mass Air Flow (M.A.F.) sensor assembly and place it rearward out of the way.
- d) Remove the air filter-housing base. Grip from the hinge (engine) side and lift straight up to remove.
- e) Remove the air filter housing base bracket. Use a 13mm wrench to remove the bolt UNDER the fender.

## **III Remove M.A.F. to Air box adapter.**

- a) Disconnect the Manifold Air Temperature (M.A.T.) sensor wire.
- e) Remove the 90° adapter from the inlet of the M.A.F. Loosen the clamp and pull off.
- b) Remove the M.A.T. sensor from the adapter. Be gentle and save for reinstallation.
- c) Remove the M.A.T. grommet from the adapter. Save for reinstallation.
- d) BE VERY GENTLE WITH THE M.A.F!! It is very fragile!!

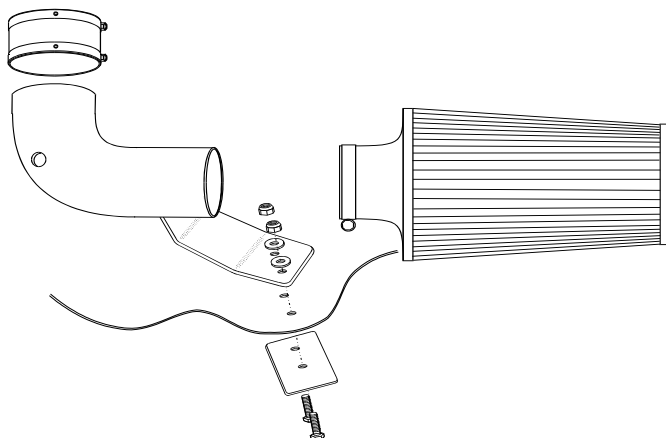
## **IV Install the new ceramic coated 90° filter adapter.**

- a) Install, using supplied hardware, onto the two existing holes in the fender. The backing plate installs from the bottom side of the fender.
- b) Slide the 3.5" stainless coupler onto the adapter.
- c) Insert the M.A.F. into the coupler. Align the assembly and carefully step tighten the stainless coupler.
- d) Install the M.A.T. grommet in the adapter hole. Now, carefully insert the M.A.T. and reconnect the wire.
- e) Tighten the filter adapter on the fender.

**\* Note: Some '98's have been equipped with A.I.R. (smog) pumps. If you have a 1" hose remaining after the install, then you have it and will require an additional breather #770-461.**

## **V Finishing up Airaid Installation.**

- a) Check for any foreign objects in the airflow path.
- b) Reconnect battery cable. Double-check your work. Have fun!!



Rev. 02/09/07