

AIRRAID®

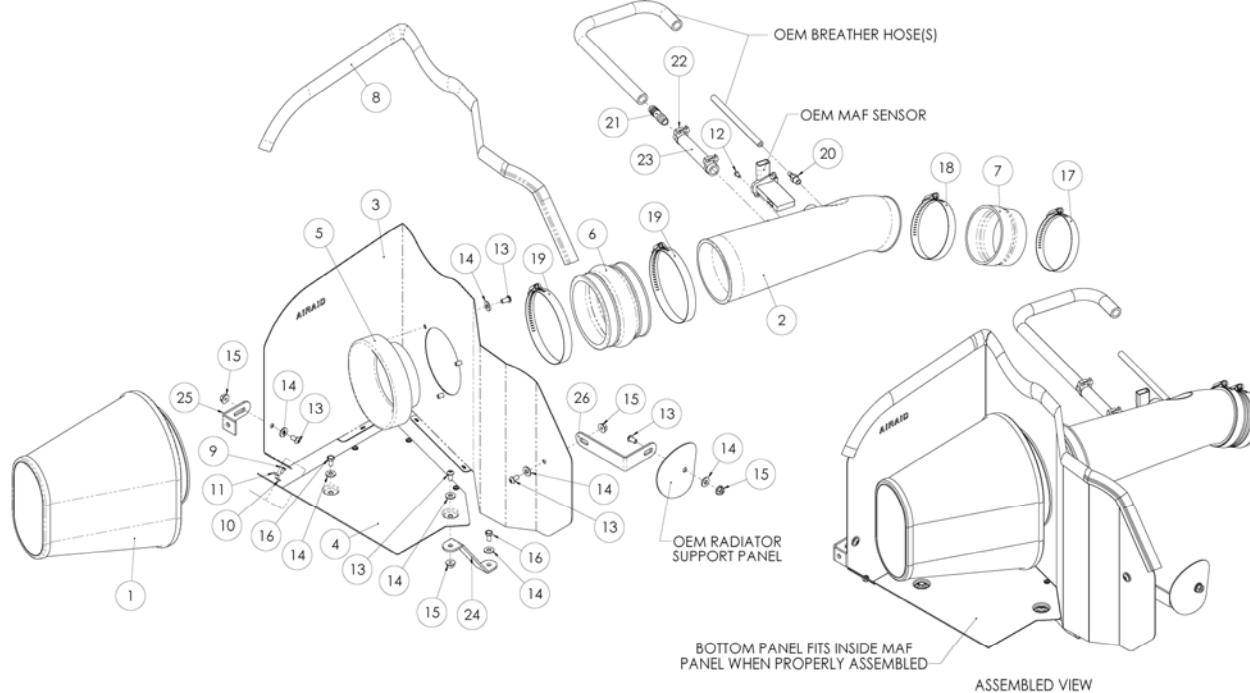
INTAKE SYSTEMS

Installation Instructions

Part Number 510-213

2007 Toyota Tundra 5.7L V-8

CAD Intake Kit

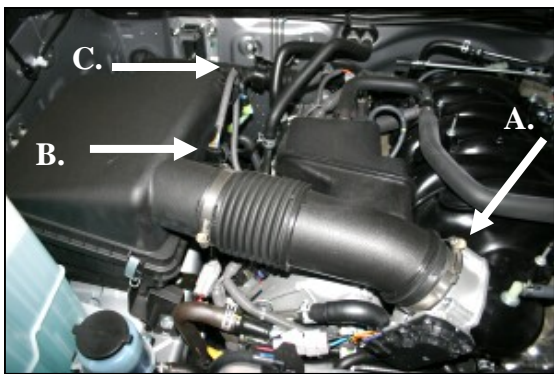


Packing List:

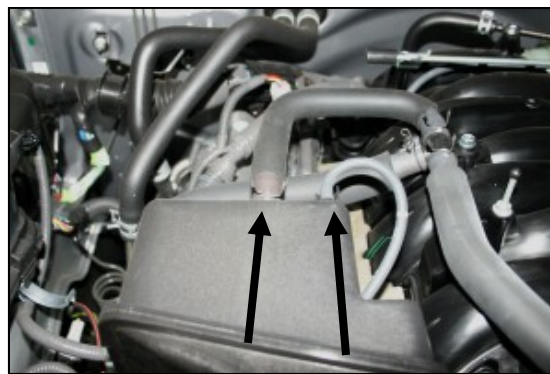
#1	720-472	Airaid Premium Filter	1
#2	KIT213T	Airaid Intake Tube	1
#3	KIT213MAFC	MAF Panel	1
#4	KIT213BPC	Bottom Panel	1
#5	KIT112MAFADA	Filter Adapter	1
#6	KITHUMPHS05	Urethane Hump Hose	1
#7	KITRDCR04	Reducer Coupler	1
#8	KITWSTRIP02	Weather Strip 37 1/2"	1
	KIT213HP	Hardware & Instructions	1
#9	KIT6C31MXPPZ	6-32x5/16" Screw	4
#10	KIT6NWSAPZ	#6 Flat Washer	4
#11	KIT6CNKEPZ	6-32 Keps Nut	4
#12	KIT15BHC3038	8-32x3/8" Button Head Screw	2
#13	KIT15DHC3050	1/4-20x1/2" Button Head Bolt	7
#14	KIT09FWZ019	1/4" Flat Washer	9
#15	KIT1420WZZF	1/4" Serrated Nut	4
#16	KIT60C120HCS	M6x12mm Hex Bolt	2
#17	KITHS52	#52 Hose Clamp	1
#18	KITHS56	#56 Hose Clamp	1
#19	KITHS72	#72 Hose Clamp	2
#20	KITFITTING14	1/8"NPTx3/16" Barb Fitting	1
#21	KITFITTING08	1/2"to1/2" Barb Fitting	1
#22	KITSNP16M4	#16 Speed Clamp	2
#23	KITHOSE01	1/2"x4 1/2" Breather Hose	1
#24	KIT110FB	#110 Bracket	1
#25	KIT140B	#140 Bracket	1
#26	KIT203B	#203 Bracket	1

Tools Required For Installation:

5/16", 10mm Sockets
 Ratchet & Extension
 7/16" Wrench
 3/32", 5/32" Allen Wrench
 Phillips Head Screw Driver



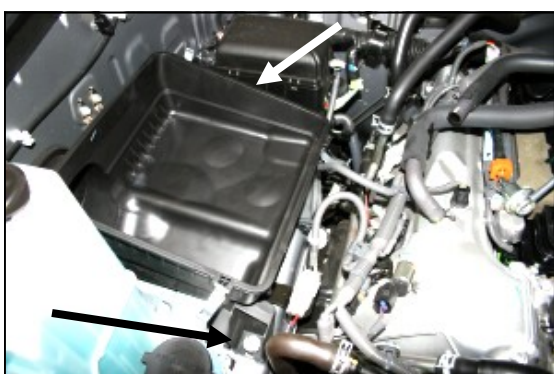
- 1. Disconnect the negative battery cable.** Remove the factory beauty cover.
 A) Loosen the hose clamp on the factory intake tube where it connects to the throttlebody.
 B) Disconnect the Mass Air Flow sensor wiring harness.
 C) Unsnap the wiring harness from the factory airbox lid.



- 2. Disconnect the factory breather hose, and vacuum hose from the factory airbox lid.**



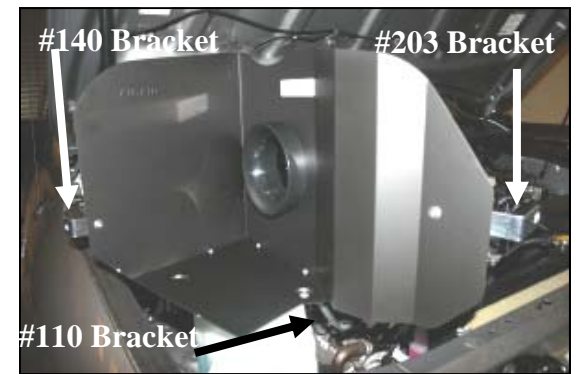
- 3. Unlatch the four metal clips that hold the airbox lid to the base and remove the intake tube and lid from the vehicle. Remove the factory air filter from the airbox base.**



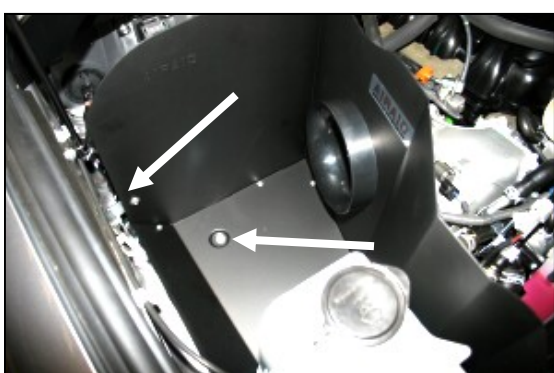
- 4. Using a 10mm socket, loosen the two bolts that hold the airbox base to the fender well, and remove it from the vehicle. There is one bolt on the front of the base, and one bolt at the rear of the base.**



- 5. Remove the rear ground anchor bolt from the side of the fender well and save it for reuse in step #7.**



- 6. Assemble the Cool Air Dam panels (#3 & #4) as shown using four 6-32 screws (#9), washers (#10), and keps nuts (#11). Install the filter adapter (#5) using three 1/4" button head bolts (#13) and washers (#14). Install the 3 brackets (#24), (#25), and (#26) as shown using three 1/4" bolts (#13), washers (#14), and nuts (#15). Just snug the bolts for now, they will be adjusted later.**



- 7. Install the CAD assembly into the vehicle. Align the hole in the bottom over the captured nut in the fender well. Install one 16mm hex bolt (#16), and washer (#14). Leave loose for now. Next reinstall the factory bolt removed in step #5, thru the bracket, into the ground anchor in the fender well.**



- 8. Remove two screws, and remove the Mass Air Flow sensor from the factory intake tube. Note the orientation of the sensor in the tube. It will need to be replaced in the same direction in the Airaid tube.**



- 9. Re-install the MAF sensor into the Airaid intake tube (#2) as shown using the supplied 8-32x3/8" button head screws (#12). Do Not Use The Factory Screws! Next install the 1/8NPTx3/16" barbed fitting (#20) into the Airaid tube.**

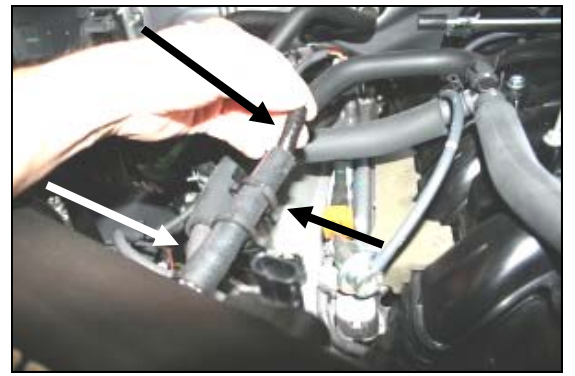


10. Install the hump hose (#6) with two #72 hose clamps (#19). Install the reducing coupler (#7) with the small end on the throttlebody. Install the #52 hose clamp (#17) over the throttlebody end, and the #56 hose clamp (#18) over the large end of the coupler. Leave the clamps loose for now.

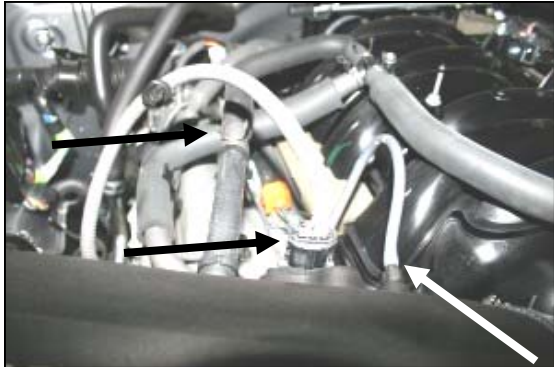


Install bolt thru the #110 bracket here.

11. Install the Airaid intake tube into the hump hose first, and then into the reducing coupler. Center the tube between the throttlebody, and the CAD, adjust for fit, and then tighten the four hose clamps. Install one 6mmx12mm bolt (#16) and washer (#14) thru the bracket into the captured nut in the fender well.



12. Install the 1/2" breather hose (#23) onto the nipple on the Airaid tube. Slide the 1/2" barbed coupler (#21) into the installed breather hose, and secure both ends with the supplied speed clamps (#22).



13. Reconnect the MAF wiring harness to the MAF sensor. Reconnect the factory breather hose to the 1/2" barbed coupler using the factory clamp. Reconnect the small vacuum hose to the 3/16" barbed fitting on the Airaid tube.



14. Fasten the #203 bracket to the existing hole in the radiator support using one 1/4-20x1/2" button head bolt (#13) washer (#14), and serrated nut (#15). Tighten all nuts and bolts that hold the CAD to the vehicle at this time.



15. Install the Airaid Premium Filter (#1) onto the filter adapter and tighten the clamp. Next install the weather strip (#8) on top of the CAD as shown. For an easier install, start at the fender side of the CAD and work your way towards the radiator. Reinstall the factory beauty cover.

16. Double check your work!

Make sure there is no foreign material in the intake path. Make sure all clamps, hoses, bolts, and screws are tight. Periodically check the tightness of all hose clamps. Double check the hood clearance.

17. Reconnect the negative battery cable!

Before!



After!



Thank you for purchasing the Airaid Intake System. Contact Airaid @ (800) 498-6951 8:00 AM - 5:00 PM MST weekdays for questions regarding fit or instructions that are not clear to you. Your Airaid Intake System was carefully inspected and packaged. Check that no parts are missing, or were damaged during shipping. If any parts are missing, contact Airaid. The air filter element is protected from direct exposure to water and debris, care should be taken not to drive through deep water. WATER INGESTION IS THE DRIVERS RESPONSIBILITY! The air filter is reusable and should be cleaned using the Airaid Filter Tune-Up Kit periodically.

Don't Forget Your AIRAID Filter Tune-Up Kit!



P/N 790-551 Aerosol Spray
P/N 790-550 Squeeze



Instructions Revision
Date: 04/20/07